



Illustrated Parts List

AXIP0031

April 1996

Single Reduction

Single Reduction with Differential Lock

15040S, 19050S, 19055S/D, 19060S/D, 21060S/D, 21065S/D,
22060S/D, 22065S/D, 23070S/D, 23080S/D, 23085S/D,
23105S/D, 26080S/D, 26085S/D, 26105S/D, 30105S/D

Axle Model Index

Introduction

Ordering Eaton® Parts -----	1
Abbreviations -----	1
Kits and Assemblies -----	1
Illustrations -----	1
Parts Listings -----	1
Effectively using a parts listing—Example -----	1
Model Identification -----	2

Single Axle Differential Carrier Single Reduction	4
--	----------

Single Axle, Single Reduction with Differential Lock	8
---	----------

Differential Lock Shift Units	9
--------------------------------------	----------

Axle Housing Hardware	13
------------------------------	-----------

Axle Shafts	15
--------------------	-----------

Single Axle Pinion Bearing Spacers	16
---	-----------

Gear and Pinion Kits	17
-----------------------------	-----------

Carrier Exchange	19
-------------------------	-----------

Yokes	23
--------------	-----------

Tools, Kits and Assemblies	24
-----------------------------------	-----------

Ordering Eaton® Parts

- This parts book is organized in sections according to parts servicing requirements. Use the Contents or page headings and colored tabs to find information.
- Use this book to order parts for your Eaton Axle.
- For convenience, part numbers have been included for all pieces of the carrier assembly. Some of these parts, such as the carrier and caps, are serviced only in kits or assemblies. Part numbers are for your reference only. Those parts not serviced separately are identified with NSS.

Abbreviations

- **AR - As Required** - Parts that vary in quantity with each axle. Example: shims
- **NSS - Not Serviced Separately** - Items which can only be purchased in sets, kit form or service assemblies. Example: brake shoes.
- **RH/LH - Right Hand/Left Hand** - Determined as viewed from behind the vehicle looking forward.
- **“RTV” - Gasket Compound** - Formed-in-place gasket sealer. It is recommended for use on all surfaces requiring a gasket.
- **Assy - Assembly**
- **Brg - Bearing**
- **Diff - Differential**
- **Hsg - Housing**
- **Inv - Involute**
- **IASS - In Axle Speed Sensor**
- **ABS - Antilock Brake System**
- **N/A - Not Applicable**
- **Str - Straight**

Kits and Assemblies

- Kits and Assemblies contain groups of individual or assembled parts developed for optimal replacement or repair of a service problem.
- Kits and Assemblies are shown with applicable parts groupings in the parts listing.
- See the Appendix for detailed information concerning kits applicable to this model.

Illustrations

- Illustrations show parts in assembly groups.
- Item numbers on illustrations correspond with parts listings on pages that accompany the drawings
- Notes are included on illustrations where additional is needed.

Parts Listings

- Parts listings are defined by parts groupings and are broken down by service assemblies.
- Parts Listings identify a part for servicing with the following categories:
 - **Item** - corresponds with numbers on illustrations for part identification
 - **Current Part** - service part numbers are broken down by model, type or other applicable information
 - **Description** - specifies part name or description
 - **Replaced Part** - identifies superseded or replaced part numbers
 - **Quantity (Qty)** - quantity required for assembly
 - **Notes** - define unique characteristics or requirements
 - **Kits/Assy's Where Used** - indicates Kits or Assemblies that contain a particular part

* **Other pertinent information is listed in tables or parts listings as required.**

Effectively using a parts listing—Example

- Follow the example below to locate and order exactly what is required for servicing.

Match to items on illustration Use to identify Part		Order this quantity for servicing	Order Part Number by Model indicated		Indicates information important to ordering or use
Item	Description	Qty	DS454-P	DD454-P	Notes
1	Axle Shaft	2	123456	789101	See Axle Shaft Chart
2	Flat Washer	4	246810	121416	

Kits And Assemblies

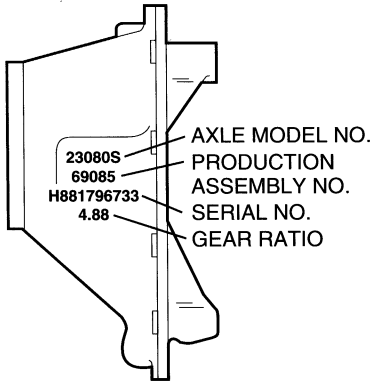
Oil Seal & Shim Kit	216225	Includes 29-30, 36
Basic Overhaul Kit	216221	Contents Identified with •

Model Identification

Location of Model Identification

Differential carrier identification is either stamped on the carrier itself or on a metal tag affixed to the carrier. Location on the carrier is the same.

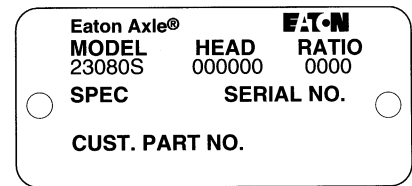
Single Drive Axle



Top View

Model Identification

23	080	S
(GAWR x 1000 lbs.)	(GCW x 1000 lbs.)	Gearing D - Single Reduction with Wheel Differential Lock S - Single Reduction T - 2-Speed P - Planetary Double Reduction C - Single Reduction with Controlled Traction Differential



Metal Tag

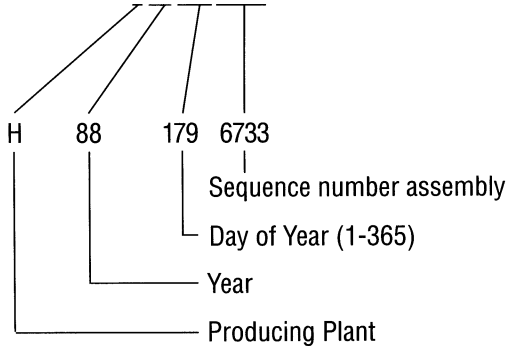
Carrier Assembly Serial Numbers

Starting in May of 1987, Eaton began assigning serial numbers to carrier assemblies, instead of just a date code. These serial numbers will be stamped into the carrier casting.

The carrier assembly serial number will consist of ten characters; a letter followed by nine numerals. A sample carrier assembly serial number is shown.

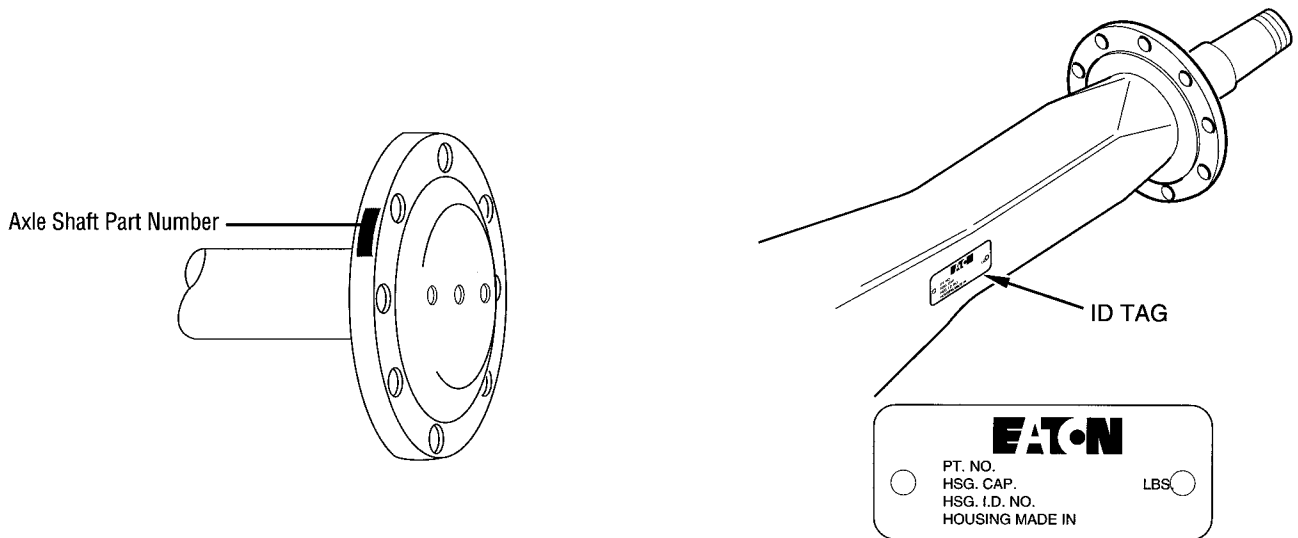
The letter designation indicates the producing plant; either an "H" for Henderson, Kentucky plant, or "G" for our Glasgow, Kentucky plant. A five digit Julian date code follows, the first two digits indicating the year, and the last three indicating the day of the year. The last four digits are a number unique to each axle.

Serial Number H881796733



Model Identification

- Axle Housings are identified by the specification number stamped on the rear right hand side of the axle housing. This number identifies all components of the axle as built by Eaton, including OEM special requirements such as yoke or flange. Some axles may also include an identification tag as shown.
- These axles will be found with a number of different Axle Shafts, on the basis of OEM specification. When ordering replacement axle shafts, note the part number stamped into the flange.



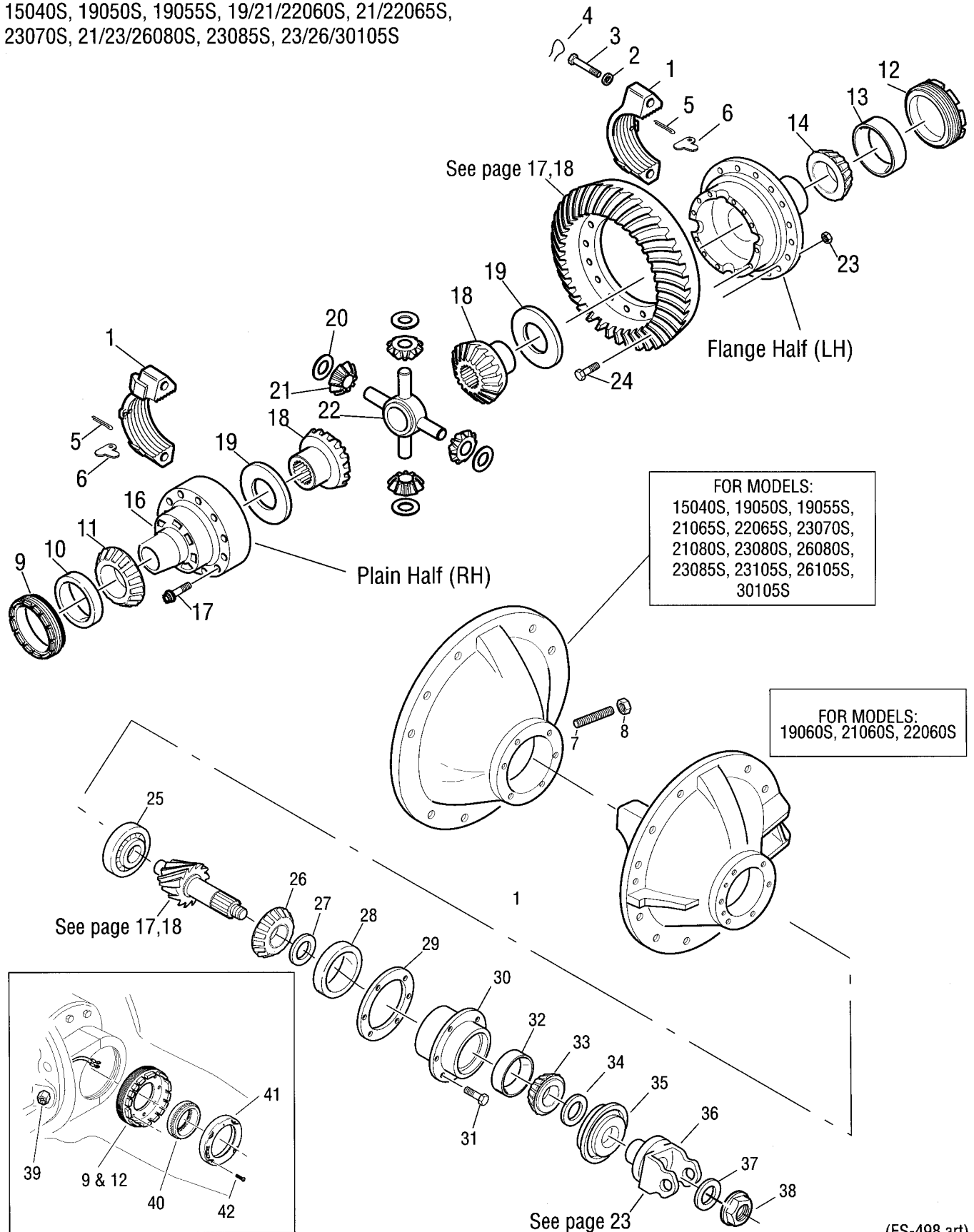
- The axles illustrated in this book are specified with a variety of different axle shafts, according to OEM specifications. **When ordering replacement axle shafts, note the part number stamped into the flange.**

Using Model Designation to Identify Axle Components

- The Axle Model Identification number contains information that is important to understand when purchasing service parts or new components. The Model Identification number provides important vehicle, capacity and application information and model features. Use this guideline to understand your Axle Model Identification. If you need assistance, contact your Eaton Roadranger® Field Marketing regional representative.

Single Axle Differential Carrier Single Reduction:

15040S, 19050S, 19055S, 19/21/22060S, 21/22065S,
23070S, 21/23/26080S, 23085S, 23/26/30105S



Single Axle/Single Reduction

ITEM NO.	DESCRIPTION	QTY. PER AXLE	23085S						
			15040S	19050S	19060S	19055S	21080S	23105S	
			21060S	21065S	21060S	21065S	23080S	26105S	
			22060S	22065S	23070S	26080S	30105S		
BASIC OVERHAUL KIT (CONTENTS IDENTIFIED WITH *)		1	121733*	121747*	216221*	121769*	121784*	213744*	119801*
1	DIFF. CARRIER & BEARING CAPS	1	121737	121754	216223	121774	121791	213652	119792
	CARRIER CASTING NO. (NSS)	1	210316	210393	127479	126044	210698	210698	128319
	UNITS BUILT AFTER 5-1-90		NOTE 1	NOTE 1					
2	FLAT WASHER	4	210175	210288	210288	210288	210288	210288	32912
3	BEARING CAP SCREW	4	210134	210095	210095	210095	210095	210095	127180
4	LOCKWIRE								12563
5	COTTER PIN - LH	1	90873	90873	90873	90873	90873	90873	90873
6	BEARING CAP ADJUSTER LOCK								14275
7	RING GEAR THRUST SCREW	1	126193	126193		126193	126193	126193	126193
8	THRUST SCREW JAM NUT	1	210184	210184		210184	210184	210184	210184
9	DIFF. BEARING ADJUSTER - RH	1	210108	210108	129130	210179	210179	210179	113885
	DIFF. BEARING ADJUSTER - R.H. (I.A.S.S.)				128429				128299
10	DIFF. BEARING CUP - RH	1	90951*	90951*	9803*	9803*	9803*	9803*	83824*
11	DIFF. BEARING CONE - RH	1	40679*	40679*	27813*	27813*	27813*	27813*	83825*
12	DIFF. BEARING ADJUSTER - LH	1	210389	210389	129128	210009	210009	210009	113884
	DIFF. BEARING ADJUSTER - L.H. (I.A.S.S.)				128428				128301
13	DIFF. BEARING CUP - LH	1	9803*	9803*	90943*	31824*	31824*	31824*	12500*
14	DIFF. BEARING CONE - LH	1	27813*	27813*	6082*	31825*	31825*	31825*	12501*
WHEEL DIFF. CASE KIT		1	IDENTIFY BY RATIO BELOW. ITEMS 15, 16 & 17 INCL. IN KIT.						
	3.08-3.70	1					121787	121787	
	3.90-4.33	1					121788	121788	
	4.63-6.50	1					121789	121789	
	3.08-3.90	1							119795
	4.11-4.33	1							119793
	4.63-6.14	1							119794
	3.36-3.90	1	122233						
	4.11-4.88	1	121734						
	5.29-7.17	1	121735						
	3.36-4.11	1		121750					
	4.33-5.29	1		121751					
	5.57-7.17	1		121752					
	3.08-3.55	1				211407			
	3.70-4.33	1				121770			
	4.63-7.17	1				121771			
	2.64-3.25	1			216230				
	3.36-3.90	1			216231				
	4.11-4.88	1			216232				
	5.29-6.50	1			216233				

NOTE 1: Thrust screw and thrust screw jam nut not used after May 1, 1990.

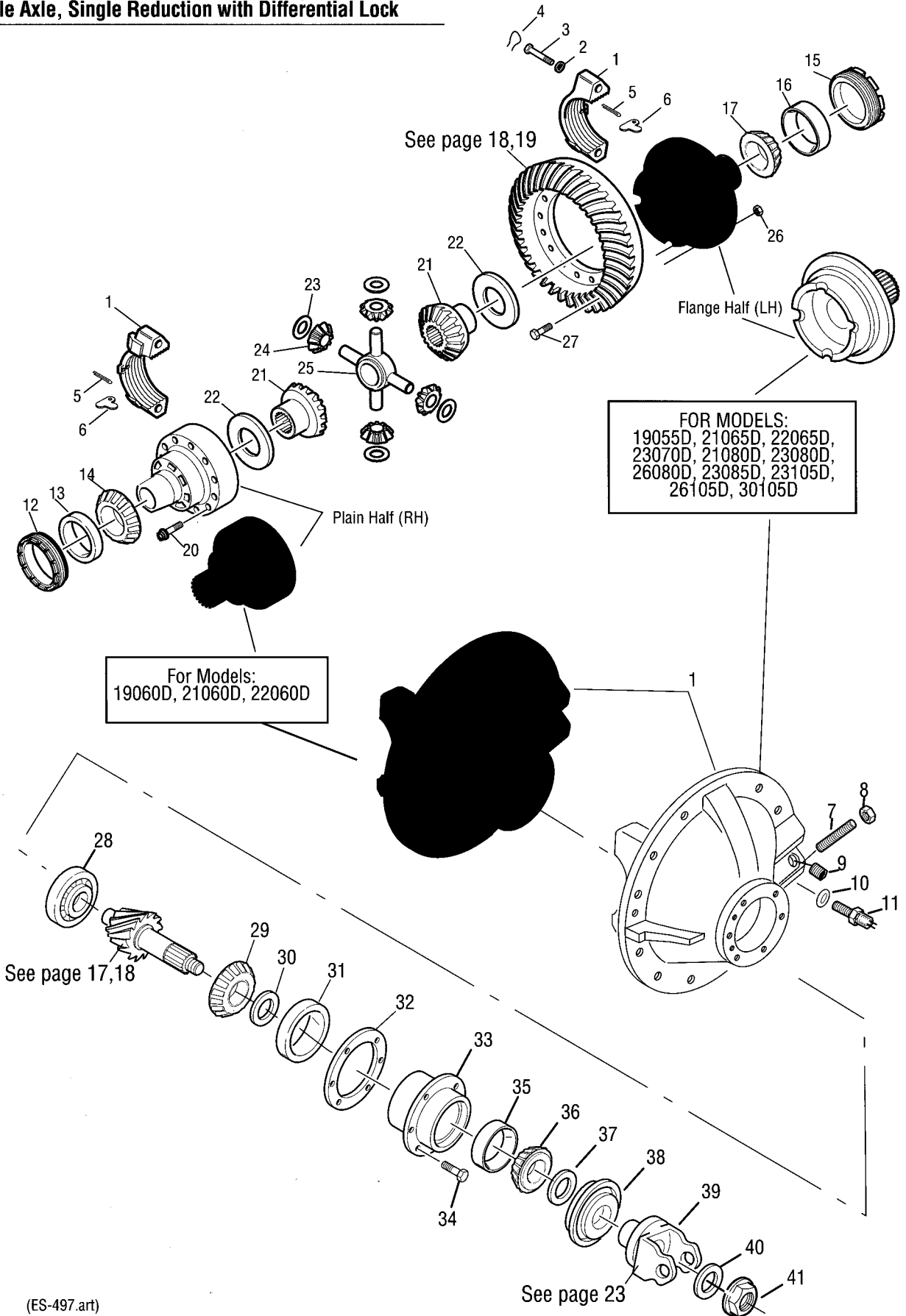
Single Axle/Single Reduction, Continued

ITEM NO.	DESCRIPTION	QTY. PER AXLE	19060S			19055S		23085S	
			15040S	19050S	22060S	22065S	23070S	26080S	30105S
	WHEEL DIFF. CASE KIT (CONTINUED)	1	IDENTIFY BY RATIO BELOW. ITEMS 15, 16 & 17 INCL. IN KIT.						
15	DIFF. CASE (FLANGE HALF) (NSS)	1							
	3.08-3.70	1					210504	210504	
	3.90-4.33	1					210505	210505	
	4.63-6.50	1					210506	210506	
	3.08-3.90	1							113863
	4.11-4.33	1							113861
	4.63-6.14	1							113862
	3.36-3.90	1	126037						
	4.11-4.88	1	126036						
	5.29-7.17	1	126035						
	3.36-4.11	1		210390					
	4.33-5.29	1		210391					
	5.57-7.17	1		210392					
	3.08-3.55	1				126190			
	3.70-4.33	1				126191			
	4.63-7.17	1				126192			
	2.64-3.25	1			127585				
	3.36-3.90	1			127586				
	4.11-4.88	1			127574				
	5.29-6.50	1			127575				
16	DIFF. CASE (PLAIN HALF) (NSS)	1	126996	126014	127498	210017	210507	210507	113864
17	DIFF. CASE CAP SCREW	12	210469	210469	127465	210091	210513	210513	88503
	WHEEL DIFF. KIT	1	114467	121748			121785	121785	102546
	19060S	1			217461				
	21060S/22060S	1			216229				
	19055S	1				114469			
	21065S / 22065S	1				114470			
	WHEEL DIFF. LESS SIDE GEAR KIT	1	118746	121749	216228	118748	121786	121786	118749
18	DIFF. SIDE GEAR	2							
	34 INVOLUTE SPLINES	2	110522						
	36 INVOLUTE SPLINES	2		126000			118959	118959	93401
	39 INVOLUTE SPLINES	2			127367	110525			86779
	41 INVOLUTE SPLINES	2			127368	110527			
19	SIDE GEAR THRUST WASHER	2	20850*	126004*	127386*	27827*	83726*	83726*	27274*
20	SIDE PINION THRUST WASHER	4	25968*	126003*	127369*	27810*	108145*	108145*	86781*
21	SIDE PINION	4	102512	126001	127364	104139	108142	108142	86780
22	SPIDER	1	20766	126002	127359	38289	210572	210572	86778
	RING GEAR & DRIVE PINION SET	1	REFER TO PAGE 17,18						

Single Axle/Single Reduction, Continued

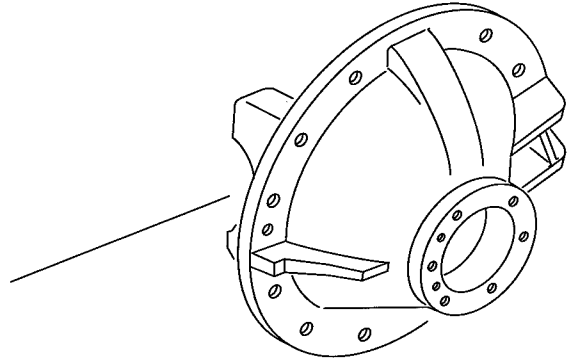
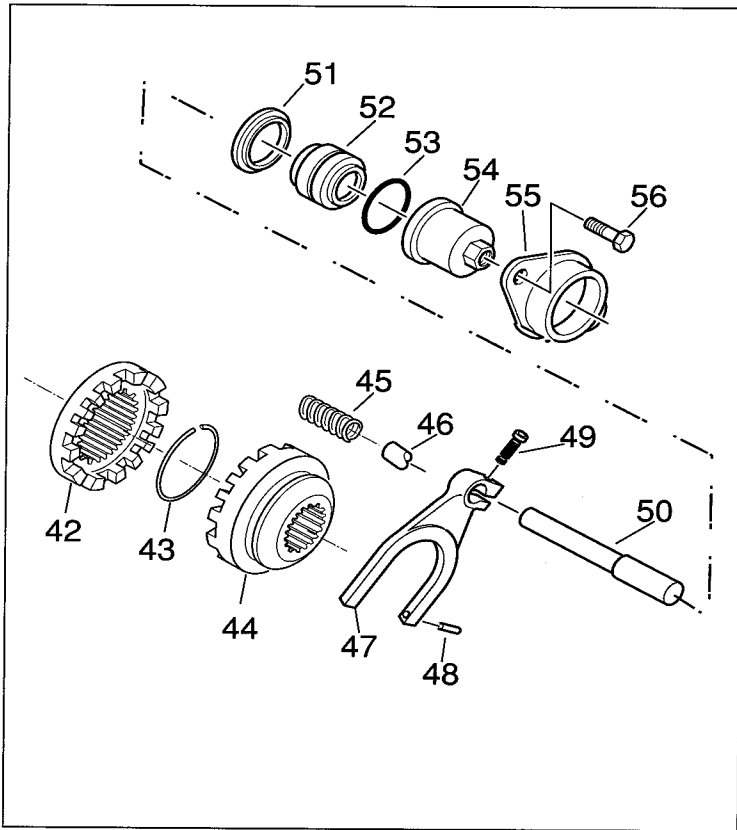
ITEM NO.	DESCRIPTION	QTY. PER AXLE							23085S	
			15040S	19050S	19060S 21060S	19055S 21065S	23070S	21080S 23080S	23105S 26105S	
	RING GEAR BOLT & NUT KIT	1	121736	121753	219704	121772	121790	121790	119802	
23	NUT	16	126217	126216	126216	126216	126215	126215	84497	
24	BOLT	16	126218	126219	126219	126220	126221	126221	113888	
25	PINION PILOT BEARING	1	210353*	210111*	127485*	126187*	126187*	127826*	120080*	
26	PINION BEARING CONE (INNER)	1	33699*	45460*	14218*	27239*	210475*	126286*	126286*	
27	PINION BEARING SPACER	AR	REFER TO PAGE 16							
28	PINION BEARING CUP (INNER)	1	12495*	14217*	14217*	27238*	210474*	126287*	126287*	
29	PINION BEARING CAGE SHIMS	AR								
	.003"		107567*	107567*	127595*	67920*	113876*	113876*	113876*	
	.005"		107568*	107568*	127596*	67921*	113877*	113877*	113877*	
	.010"		107569*	107569*	127597*	67922*	113878*	113878*	113878*	
	.020"		107570*	107570*	127598*	67923*	113879*	113879*	113879*	
	.030"		NLA	NLA	127599*	67924*	113880*	113880*	113880*	
	OIL SEAL & SHIM KIT	1	115551	115551	216225	121773	119796	119796	119796	
	PINION BEARING CAGE & CUP ASSY. INCL. 30 & 32.	1	210340	210189	127600	210011	210511	127843	126290	
30	CAGE (NSS)	1	210339	210188	127481	210010	210510	127844	126289	
31	BEARING CAGE CAP SCREW	6	210115	210115	210115	210094	210094	210094	113867	
32	PINION BEARING CUP (OUTER)	1	49849*	49849*	12495*	12495*	14217*	113869*	113869*	
33	PINION BEARING CONE (OUTER)	1	49848*	49848*	12496*	12496*	14218*	113868*	113868*	
34	INPUT YOKE SPACER								126940*	
35	PINION OIL SEAL	1	119427*	119427*	127591*	119427*	210724*	210724*	210724*	
36	INPUT YOKE	1	REFER TO PAGE 23							
37	WASHER	1	210114	210114		210090	210509			
38	PINION NUT	1	210133	210133	127589	210089	210508	128049	95262	
38	GASKET COMPOUND		107276*	107276*	107276*	107276*	107276*	107276*	107276*	
39	CONNECTOR (I.A.S.S.)	2			128713					
40	ROTOR ASSEMBLY -41 SPLINE	2			128081				N/A	
40	ROTOR ASSEMBLY -36 SPLINE	2			N/A				128322	
41	SENSOR ASSEMBLY	2			128082				128082	
42	FASTENERS	4			128074				128074	

Single Axle, Single Reduction with Differential Lock

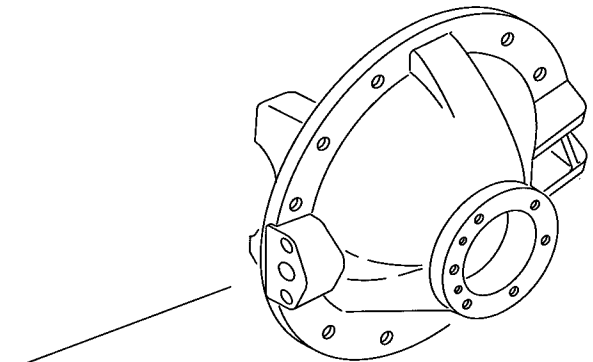
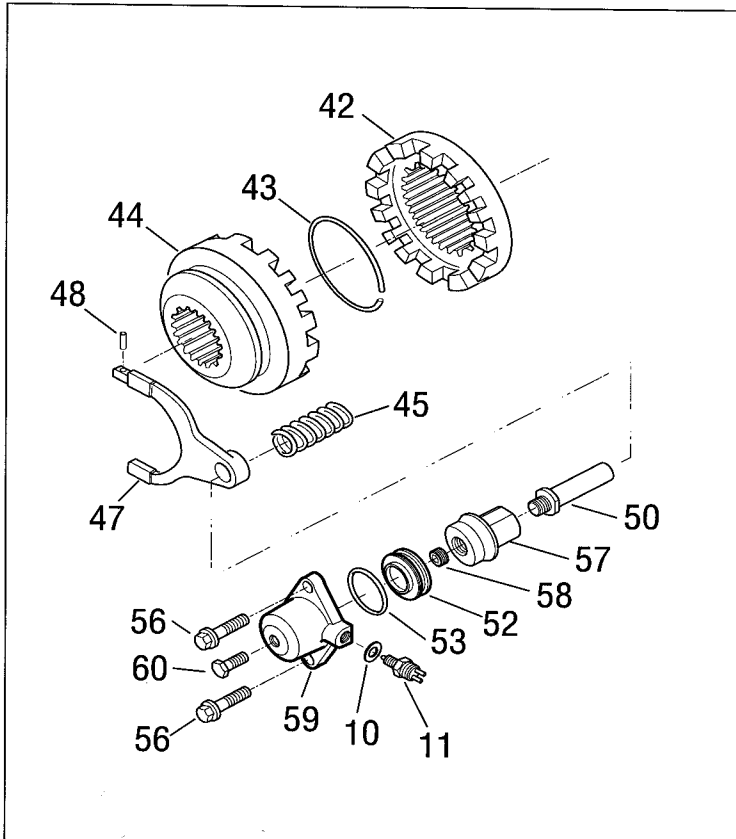


(ES-497.art)

Shift Units



For Models: 19055D, 21065D, 22065D, 23070D, 21080D, 23080D, 26080D, 23085D, 23105D, 26105D, 30105D



For Models: 19060D, 21060D, 22060D

Single Axle/Single Reduction with Differential Lock

Single Axle, Single Reduction with Differential Lock

ITEM NO.	DESCRIPTION	QTY. PER AXLE	19060D	19055D	23085D		
			21060D	21065D	21080D	23080D	23105D
			22060D	22065D	23070D	26080D	
	BASIC OVERHAUL KIT (CONTENTS IDENT. WITH *)	1	217464*	121769*	121784*	213744*	123297*
1	DIFF. CARRIER & BEARING CAPS	1	217362	211313	210701	210701	123293
	DIFF. CARR. & CAPS 23105D BEFORE 12-07-92						
	CARRIER CASTING NO. (NSS)	1	128601	126838	210697	210697	128376
	CARRIER CASTING NO. BEFORE 5-5-93						126719
2	FLAT WASHER	4	210288	210288	210288	210288	32912
3	BEARING CAP SCREW	4		210095	210095	210095	127180
4	LOCKWIRE						12563
5	COTTER PIN - RH	1	90873	90873	90873	90873	90876
	COTTER PIN - LH	1	90873	210464	210464	210464	90876
6	BEARING CAP ADJUSTER LOCK -RH						14275
	BEARING CAP ADJUSTER LOCK-LH						126979
7	RING GEAR THRUST SCREW	1		126193	126193	126193	126193
8	THRUST SCREW JAM NUT	1		210184	210184	210184	210184
9	PIPE PLUG	1		90325	90325	90325	90325
10	WASHER	1	126618	126618	126618	126618	126618
11	SWITCH	1	210280	210280	210280	210280	210280
12	DIFF. BEARING ADJUSTER - RH	1	128616	210179	210179	210179	113885
13	DIFF. BEARING CUP - RH	1	15092*	9803*	9803*	9803*	83824*
14	DIFF. BEARING CONE - RH	1	128604*	27813*	27813*	27813*	83825*
15	DIFF. BEARING ADJUSTER - LH	1	127410	210286	210286	210286	126729
16	DIFF. BEARING CUP - LH	1	90943*	31824*	31824*	31824*	126924*
17	DIFF. BEARING CONE - LH	1	6082*	31825*	31825*	31825*	27817*
	WHEEL DIFF. CASE KIT	1	IDENTIFY BY RATIO. ITEMS 18, 19 & 20 INCL. IN KIT.				
	3.08-3.70				212007	212007	
	3.90-4.33				212008	212008	
	4.63-6.50				212009		
	3.08-3.90						123294
	4.11-4.33						123295
	4.63-6.14						123296
	3.08-3.55			122117			
	3.70-4.33			122118			
	4.63-7.17			122119			
	2.64-3.25		217166				
	3.36-3.90		217167				
	4.11-4.88		217168				
	5.29-6.50		217169				
18	DIFF. CASE (FLANGE HALF) (NSS)						
	3.08-3.70				126858	126858	
	3.90-4.33				126859	126859	
	4.63-6.50				126860		
	3.08-3.90						126723
	4.11-4.33						126722

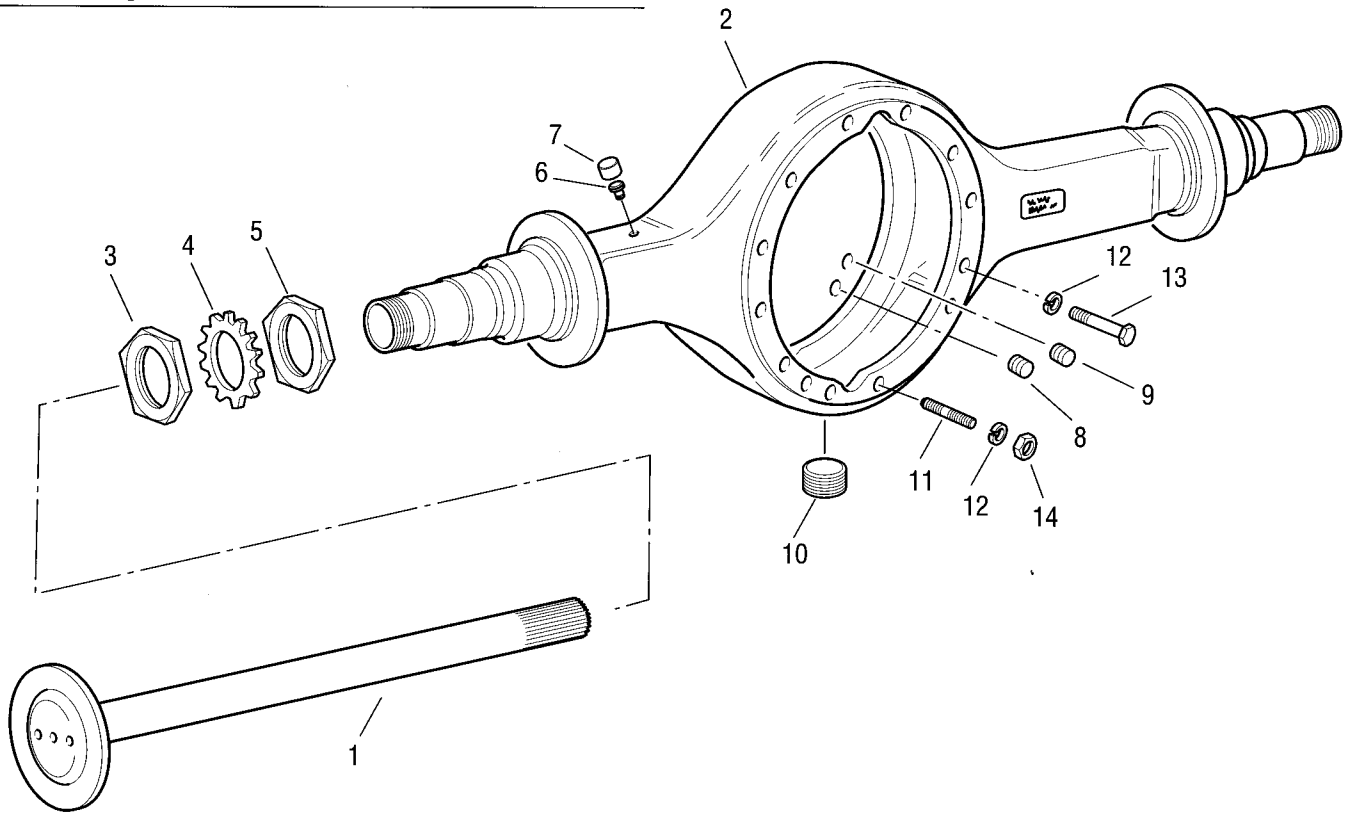
Single Axle, Single Reduction with Differential Lock, Continued

ITEM NO.	DESCRIPTION	QTY. PER AXLE	19060D	19055D	23070D	23085D	23105D	
			21060D	21065D		21080D	23080D	
			22060D	22065D		26080D		
	WHEEL DIFF. CASE KIT (CONTINUED)	1						
	RATIO VARIANCE							
	4.63-6.14						126721	
	3.08-3.55			126844				
	3.70-4.33			126845				
	4.63-7.17			126846				
	2.64-3.25		127585					
	3.36-3.90		127586					
	4.11-4.88		127574					
	5.29-6.50		127575					
19	DIFF. CASE (PLAIN HALF) (NSS)	1	128607	210017	210507	210507	113864	
20	DIFF. CASE CAP SCREW	12	128619	210091	210513	210513	88503	
	WHEEL DIFF. KIT	1			121785	121785	114472	
	19055D			114469				
	21/22065D			114470				
	19060D	1	217461					
	21060D	1	216229					
	22060D	1	217462					
	WHEEL DIFF. LESS SIDE GEAR KIT	1	216228	118748	121786	121786	118749	
21	DIFF. SIDE GEAR							
	33 INVOLUTE SPLINES 22060D	2	127366					
	34 INVOLUTE SPLINES	2						
	36 INVOLUTE SPLINES	2			118959	118959	93401	
	39 INVOLUTE SPLINES 19055D OR 19060D	2	127367	110525				
	41 INVOLUTE SPLINES 21/22065D OR 21060D	2	127368	110527				
22	SIDE GEAR THRUST WASHER	2	127386*	27827*	83726*	83726*	27274*	
23	SIDE PINION THRUST WASHER	4	127369*	27810*	108145*	108145*	86781*	
24	SIDE PINION	4	127364	104139	108142	108142	86780	
25	SPIDER	1	127359	38289	210572	210572	86778	
	RING GEAR & DRIVE PINION SET	1	REFER TO PAGE 17, 18					
	RING GEAR BOLT & NUT KIT	1	219704	121772	121790	121790	119802	
26	NUT	16	126216	126216	126215	126215	84497	
27	BOLT	16	126219	126220	126221	126221	113888	
28	PINION PILOT BEARING	1	127485*	126187*	126187*	127826*	120080*	
29	PINION BEARING CONE (INNER)	1	14218*	27239*	210475*	126286*	126286*	
30	PINION BEARING SPACER	AR	REFER TO PAGE 16					
31	PINION BEARING CUP (INNER)	1	14217*	27238*	210474*	126287*	126287*	
32	PINION BEARING CAGE SHIMS	AR						
	.003"		127595*	67920*	113876*	113876*	113876*	
	.005"		127596*	67921*	113877*	113877*	113877*	
	.010"		127597*	67922*	113878*	113878*	113878*	
	.020"		127598*	67923*	113879*	113879*	113879*	
	.030"		127599*	67924*	113880*	113880*	113880*	

Single Axle, Single Reduction with Differential Lock, Continued

ITEM NO.	DESCRIPTION	QTY. PER AXLE	19060D	19055D		23085D		
			21060D	21065D	23070D	21080D	23080D	23105D
	PINION BEARING CAGE & CUP ASSY.	1	127600	210011	210511	127843	126290	
33	CAGE (NSS)	1	127481	210010	210510	127844	126289	
34	BEARING CAGE CAP SCREW	6	210115	210094	210094	210094	113867	
35	PINION BEARING CUP (OUTER)	1	12495*	12495*	14217*	113869*	113869*	
36	PINION BEARING CONE (OUTER)	1	127535*	12496*	14218*	113868*	113868*	
37	INPUT YOKE SPACER						126940*	
38	PINION OIL SEAL	1	127591*	119427*	210724	210724	210724	
	OIL SEAL & SHIM KIT	1	216225	121773	119796	119796	119796	
39	INPUT YOKE	1	REFER TO PAGE 23					
40	WASHER	1			210509			
41	PINION NUT FLANGED-LOCKNUT	1	127589	127589	210508	128049	95262	
42	FIXED CURVIC CLUTCH	1	128627	126841	126841	126841	127810	
43	FIXED CURVIC CLUTCH SNAP RING	1	210299	210299	210299	210299	126728	
44	SLIDING CURVIC CLUTCH	1			127211	127211	127811	
	19055D	1		127210				
	21065D/22065D	1		126840				
	SLIDING CURVIC CLUTCH GEAR 21060D/19060D		126840					
	SLIDING CURVIC CLUTCH GEAR 22060D		128926					
45	COMPRESSION SPRING	1	128614	31038	31038	31038	31038	
46	SWITCH ACTUATOR	1		210279	210279	210279	210279	
47	SHIFT FORK (NSS)	1	128611	126842	126842	126842	128379	
	SHIFT FORK (NSS) 23105D BEFORE 12-07-92						126726	
	SHIFT FORK SUBASSEMBLY. INCL. 47, 48 & 49.	1	217465	219456	219456	219456	219457	
48	SHIFT FORK SPRING PIN	1	210020	210020	210020	210020	210020	
49	SHIFT FORK CAP SCREW	1		210191	210191	210191	210191	
50	PUSH ROD	1	128617	210277	210277	210277	210277	
51	SHOULDER WASHER	1		210452	210452	210452	210452	
52	PISTON	1	128624	210278	210278	210278	210278	
53	O-RING	1	210180	210180	210180	210180	210180	
54	SHIFT CYLINDER BODY	1		210640	210640	210640	210640	
55	DIFF. LOCK SHIFT CYL. ASSY.	1		126806	126806	126806	126806	
	MOUNTING BRACKET (NSS)	1		127675	127675	127675	127675	
56	BRACKET CAP SCREW	2	128744	210182	210182	210182	210182	
57	PISTON DRIVER		128640					
58	SET SCREW		128618					
59	PISTON COVER		128612					
60	CAPSCREW		128274					
61	GASKET COMPOUND		107276*	107276*	107276*	107276*	107276*	

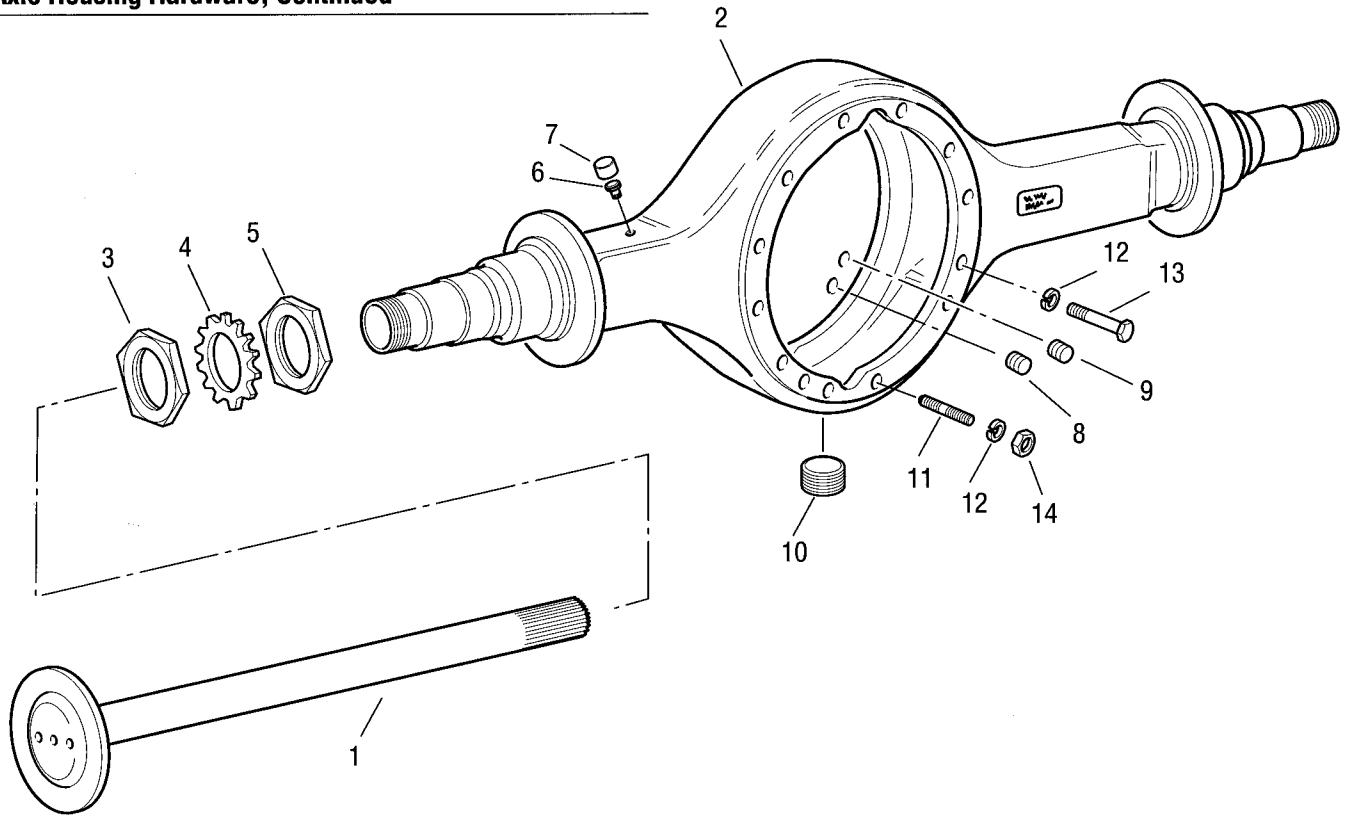
Axle Housing Hardware



61510-8-95

ITEM NO.	PART NUMBER	QTY. PER AXLE	19055S					21060S
			15040S	19050S	19055D	19060S	19060D	22060S
1	AXLE SHAFT		REFER TO PAGE 15					
2	AXLE HOUSING ASSY.		SEE O. E. M. CATALOG					
3	OUTER NUT	2	215109	19186	19186	19186	19186	119881
4	LOCK WASHER	2	215112	30714	30714	30714	30714	119883
5	INNER NUT	2	215109	19186	19186	19186	19186	119882
6	VALVE (BREATHER)	1	809560	809560	809560	809560	809560	809560
7	CAP (BREATHER)	1	126980	126980	126980	126980	126980	126980
8	1/2" PLUG (THERMAL)	1	90898	90898	90898	90898	90898	90898
9	MAGNETIC FILL PLUG	1	75130	75130	75130	127572	127572	127572
10	MAGNETIC DRAIN PLUG	1	54254	54254	54254	54254	54254	54254
11	STUD-CARRIER TO HSG.	2					127641	
		4				127641		127641
12	LOCKWASHER	12	210140	210140	90422	90422	90422	90422
13	CAPSCREW CARRIER TO HSG.	2					128639	
		8				210173	210173	210173
		12	210135	210135	210173			
	GM ONLY DBL. ENDED CAPSCREW & CAPSCREWS	2	210377	210377	210380			
		10	210135	210135	210173			
14	HEX NUT	2					127567	
		4				127567		127567

Axle Housing Hardware, Continued



61510-8-95

ITEM NO.	PART NUMBER	QTY. PER AXLE	21065S		23070S		23105S	
			21060D	21065D	23080S	23085S	23105D	23105S
1	AXLE SHAFT		REFER TO PAGE 15					
2	AXLE HOUSING ASSY.		SEE O.E.M. CATALOG					
3	OUTER NUT	2	119881	119881	119881	119881	119881	126676
4	LOCK WASHER	2	119883	119883	119883	119883	119883	33548
5	INNER NUT	2	119882	119882	119882	119882	119882	126675
6	VALVE (BREATHER)	1	809560	809560	809560	809560	809560	809560
7	CAP (BREATHER)	1	126980	126980	126980	126980	126980	126980
8	1/2" PLUG (THERMAL)	1	90898	90898	90898	90898	90898	90898
9	MAGNETIC FILL PLUG	1	127572	75130	75130	75130	75130	75130
10	MAGNETIC DRAIN PLUG	1	54254	54254	54254	54254	54254	54254
11	STUD-CARRIER TO HSG.	2	127641					
		4						
12	LOCKWASHER	12	90422	90422	90422	90422	90422	90422
13	CAPSCREW CARRIER TO HSG.	2	128639					
		8	210173					
		12			210173	210173	90078	90078
	GM ONLY DBL. ENDED CAPSCREW & CAPSCREWS	2		210380				
		10		210173				
14	HEX NUT	2	127567					
		4						
		12						

Axle Shafts

Axle Shafts

MODEL	PART NO.	QTY	SPLINE	BODY	SHAFT	SPLINE	FLANGE	FLANGE	OEM
				O.D.	LENGTH	LENGTH	O.D.	HOLES	
15040S	111544	1	34	1.61	38.843	4.00	6.223	8 (.781) TPR	1,2
19050S	210512	1	36	1.81	41.313	4.00	6.125	12 (.748) TPR	2
19055S/D	119927	1	39	1.81	40.906	4.00	6.125	12 (.748) TPR	2
	127870	1	39	1.81	40.906	4/4 DBL	6.125	12 (.750) TPR	1,2
21065S/D	110883	1	41	1.89	41.313	4.00	8.500	8 (.948) TPR	2,5,7,9
22065S/D	110884	1	41	1.89	41.594	4.00	8.500	8 (.948) TPR	7
	126880	1	36	2.06	40.600	4.00	8.500	8 (.948) TPR	1
	110885	1	36	2.06	41.375	4.00	8.500	8 (.948) TPR	2
	210655	1	36	2.06	41.375	4/3.4 DBL	8.500	8 (.948) TPR	7
21080S/D	110885	1	36	2.06	41.375	4.00	8.500	8 (.948) TPR	2
23080S/D	126880	1	36	2.06	40.600	4.00	8.500	8 (.948) TPR	1
26080S/D	111013	1	36	2.06	41.375	4.00	8.500	8 (.635) STR	6
23085S/D	210655	1	36	2.06	41.375	4/3.4 DBL	8.500	8 (.948) TPR	5,9,10
	210704	1	36	2.06	41.375	4/3.4 DBL	8.500	8 (.635) STR	3,5,6
	126880	1	36	2.06	40.600	4.00	8.500	8 (.948) TPR	1,9
	210706	1	36	2.06	40.600	4/3.4 DBL	8.500	8 (.948) TPR	1,9
	210312	1	36	2.06	41.375	4/3.4 DBL	8.500	8 (.773) STR	*****
23105S/D	119949	1	39	2.25	40.563	4.00	8.375	8 (.773) STR	7,10
	119627	1	39	2.25	41.313	4.00	8.500	8 (.948) TPR	2,3,4,7,9,10
	119628	1	39	2.25	41.313	4.00	8.500	8 (.635) STR	3,5,6
	126966	1	36	2.25	41.313	4/4 DBL	8.500	8 (.635) STR	3,5,6
	126967	1	36	2.25	41.313	4.00	8.500	8 (.635) STR	3,5,6
	128437	1	36	2.25	41.313	DBL SPLINE	8.375	8 (.773) STR	10,7
	128438	1	36	2.25	39.764	4.00	8.375	8 (.773) STR	10,7
	128439	1	36	2.25	42.126	DBL SPLINE	8.375	8 (.948) TPR	4,7,9,11
	128440	1	36	2.25	40.563	4.00	8.375	8 (.948) TPR	4,7,9,11
23105A	128547	1	36	2.25	42.216	10.25	8.375	8 (.948) TPR	2,7,1
	128315	1	36	2.25	41.312	10.25	8.500	8 (.948) TPR	1,3,7,9
	128552	1	36	2.25	39.764	10.25	8.500	8 (.948) TPR	1,3,7,9
	128550	1	36	2.25	41.312	10.25	8.375	8 (.773) STR	7,9
	128551	1	36	2.25	39.764	10.25	8.375	8 (.773) STR	7,9
	128549	1	36	2.25	40.563	10.25	8.375	8 (.635) STR	3,6
	128548	1	36	2.25	42.216	10.25	8.375	8 (.635) STR	3,6
	19060S/D	129010	1	39	1.81	38.500	3.844	6.125	12 (.748) TPR
129011		1	39	1.81	42.750	3.844	6.125	12 (.748) TPR	2
19060A	129052	1	39	1.81	38.500	11.00	6.125	12 (.748) TPR	2
	129053	1	39	1.81	42.750	11.00	6.125	12 (.748) TPR	2
21060S/D	128514	1	41	1.89	38.130	4.00	8.500	8 (.773) STR	7,10
22060S/D	128516	1	41	1.89	38.976	4.00	8.500	8 (.948) TPR	2,4,7,9
	128561	1	41	1.89	43.307	11.00	8.500	8 (.948) TPR	2,4,7,9
	128521	1	41	1.89	38.130	4.00	8.500	8 (.948) TPR	1
	128563	1	41	1.89	42.460	11.00	8.500	8 (.948) TPR	1
	128516	1	41	1.89	38.976	4.00	8.500	8 (.948) TPR	2,4,7,9
	128517	1	41	1.89	42.460	4.00	8.500	8 (.948) TPR	2,4,7,9
	128521	1	41	1.89	38.130	4.00	8.500	8 (.948) TPR	1
	128522	1	41	1.89	42.460	4.00	8.500	8 (.948) TPR	1

1 = FORD
2 = GMC
3 = FREIGHTLINER
4 = MACK
5 = PETERBILT
6 = KENWORTH
7 = VOLVO WHITE
8 = MARMON
9 = WESTERN STAR
10 = NAVISTAR
11 = CRANE

Single Axle Pinion Bearing Spacers

15040S, 19050S

Diameter	Part No.
.698	126483
.699	126484
.700	126486
.701	126488
.702	126490
.703	126492
.704	126494
.705	126496
.706	126498
.707	126500

19055S/D, 21065S/D, 22065S/D

Diameter	Part No.
.715	210229
.716	210230
.717	210232
.718	210234
.719	210236
.720	210238
.721	210240
.722	210242
.723	210244
.724	210246

19/21/22060S/D

Diameter	Part No.
.623	91552
.624	91553
.625	91554
.626	91555
.627	91556
.628	91557
.629	91558
.630	91559
.631	91560
.632	91561
.633	91562
.634	91564
.635	91566
.636	91568
.637	91572
.638	91576

19/21/22060S/D Continued

Diameter	Part No.
.639	91580
.640	91584
.641	91588
.642	91592
.643	91596
.644	91600
.645	91602
.646	91604
.647	91606
.648	91608
.649	91610
.650	91611
.651	91612
.652	91613
.653	91614
.654	91615

23070S/D, 23080S/D, 23085S/D

Diameter	Part No.
.667	126743
.668	126744
.669	126746
.670	126748
.671	126750
.672	126752
.673	126754
.674	126756
.675	126758
.676	126760

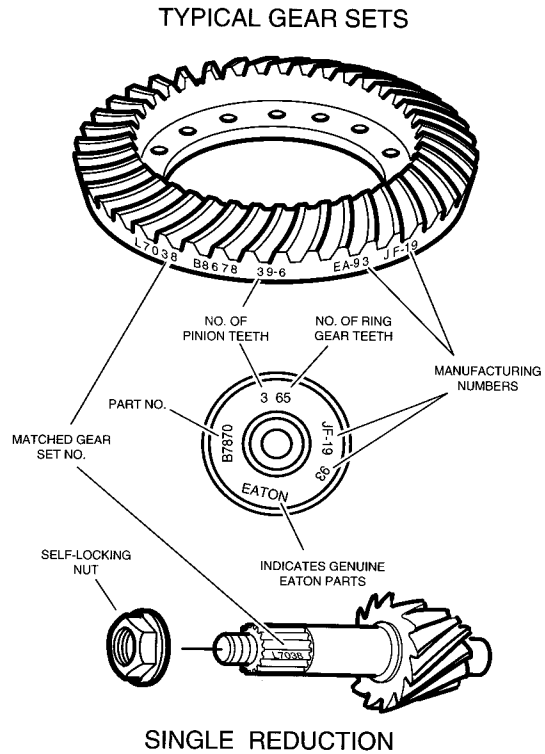
231055S/D, 261055S/D, 30105S

Diameter	Part No.
.5303	113933
.5307	113934
.5311	113935
.5315	113936
.5327	113937
.5339	113938
.5350	113939
.5362	113940
.5374	113941
.5386	113942
.5398	113943
.5409	113944

Gear and Pinion Kits

Ring Gear and Pinion Identification

Ring Gear and Drive Pinion are matched parts and must be replaced in sets. Complete identification is stamped on both parts shown in the adjacent drawing. Order by Eaton "Set No." which includes drive pinion nut.



61300-9/92

15040S

Drive Pinion Spline-34
1.750" Diameter

Ratio	Gear Set	Ring Gear (NSS)	Pinion (NSS)	Teeth No.
3.36	122347	210364	210324	37/11
3.55	122348	210365	210325	39/11
3.70	122349	210364	210326	37/10
3.90	122350	210365	210327	39/10
4.11	122231	210364	210328	37/9
4.33	122232	210365	210329	39/9
4.63	122351	210366	210330	37/8
4.88	121738	210367	210331	39/8
5.29	121739	210366	210332	37/7
5.38	217472	210363	128161	43/8
5.57	122331	210367	210333	39/7
5.83	121740	210368	210334	35/6
6.17	121741	210366	210335	37/6
6.50	122019	210367	210336	39/6
7.17	121742	210363	210337	43/6

19050S

Drive Pinion Spline-34
1.750" Diameter

Ratio	Gear Set	Ring Gear (NSS)	Pinion (NSS)	Teeth No.
3.36	122017	210362	210165	37/11
3.55	122014	210358	210167	39/11
3.70	122016	210362	210164	37/10
3.90	121755	210358	210157	39/10
4.11	121756	210359	210161	37/9
4.33	121757	210357	210156	39/9
4.63	121758	210359	210160	37/8
4.88	121759	210357	210155	39/8
5.29	121760	210359	210159	37/7
5.57	121761	210357	210154	39/7
5.83	121762	210360	210162	35/6
6.17	121763	210359	210158	37/6
6.50	121764	210357	210153	39/6
7.17	121765	210361	210163	43/6

19060S/D, 21060S/D, 22060S/D

**Drive Pinion Spline-39
2.00" Diameter**

Ratio	Gear Set	Ring Gear (NSS)	Pinion (NSS)	Teeth No.
2.64	211478	127380	127420	37/14
2.85	211479	127381	127421	37/10
3.08	211480	127381	127422	37/12
3.25	211481	127382	127423	39/12
3.36	211482	127381	127424	37/11
3.55	211483	127382	127425	39/11
3.70	211484	127381	127426	37/10
3.90	211485	127382	127427	39/10
4.11	211486	127381	127428	37/9
4.33	211487	127382	127429	39/9
4.63	211488	127383	127430	37/8
4.88	211489	127384	127431	39/8
5.29	211490	127383	127432	37/7
5.57	211491	127384	127433	39/7
6.17	211492	127383	127434	37/6
6.50	211493	127384	127435	39/6

23070S, 23070D

**Drive Pinion Spline-41
2.00" Diameter**

Ratio	Gear Set	Ring Gear (NSS)	Pinion (NSS)	Teeth No.
3.08	122356	210369	210485	37/12
3.25	122357	210370	210486	39/12
3.55	121792	210370	210488	39/11
3.70	121793	210369	210489	37/10
3.90	121794	210370	210490	39/10
4.11	122055	210371	210491	37/9
4.33	122073	210372	210492	39/9
4.63	122359	210371	210493	37/8
4.88	121795	210372	210494	39/8
5.29	122360	210371	210495	37/7
5.57	121796	210372	210496	39/7
5.83	122361	210373	210497	35/6
6.17	121797	210374	210498	37/6
6.50	121798	210375	210499	39/6
7.17	212871	210396	210397	43/6

19055S, 19055D, 21065S, 21065D, 22065S, 22065D

**Drive Pinion Spline-39
2.00" Diameter**

Ratio	Gear Set	Ring Gear (NSS)	Pinion (NSS)	Teeth No.
3.08*	122352	126046	126054	37/12
3.25*	122353	126047	126055	39/12
3.36	122354	126046	126056	37/11
3.55	122355	126047	126057	39/11
3.70	122211	126048	126058	37/10
3.90	121775	126049	126059	39/10
4.11	122209	126048	126060	37/9
4.33	122109	126049	126061	39/9
4.63	122099	126048	126062	37/8
4.88	121776	126049	126063	39/8
5.29	121777	126048	126064	37/7
5.57	121778	126049	126065	39/7
5.83	122018	126050	126066	35/6
6.17	121779	126051	126067	37/6
6.50	121780	126052	126068	39/6
7.17	121781	126053	126069	43/6

23080S/D, 23085S/D

**Drive Pinion Spline-44
2.250" Diameter**

Ratio	Gear Set	Ring Gear (NSS)	Pinion (NSS)	Teeth No.
2.85	214542	210722	210723	37/13
3.08	213414	127847	127845	37/12
3.25	213415	210693	210681	39/12
3.36	213416	127847	210682	37/11
3.55	213417	210693	210683	39/11
3.70	213418	127847	210684	37/10
3.90	213419	210693	210685	39/10
4.11	213420	210694	210686	37/9
4.33	213421	210695	210687	39/9
4.63	214896	210694	210688	37/8
4.88	214873	210695	210689	39/8
5.29	217150	210371	210755	37/7
5.57	217151	210372	210756	39/7
5.83	217152	210373	210757	35/6
6.17	217153	210374	210758	37/6
6.50	217154	210375	210759	39/6

Gear & Pinion Cont.

23105S/D, 26105S, 30105S

Drive Pinion Spline-44

2.320" Diameter

Ratio	Gear Set	Ring Gear (NSS)	Pinion (NSS)	Teeth No.
2.85	216419	128931	128933	37/13
3.08	121243	119874	119875	37/12
3.36	113851	113821	113831	37/11
3.58	113852	113822	113832	43/12
3.70	113853	113823	113833	37/10
3.90	113854	113824	113834	39/10
4.11	113855	113825	113835	37/9
4.33	113856	113826	113836	39/9
4.63	113850	113829	113839	37/8
5.25	113857	113827	113837	42/8
6.14	113858	113828	113838	43/7

Carrier Exchange

15040S

13.25 Hypoid Gearing

Side Gear #110522

Ratio	Side Gear Spline	Carrier Exchange
3.36	34 Involute	674935
3.55	34 Involute	675232
3.70	34 Involute	674734
3.90	34 Involute	674735
4.11	34 Involute	674736
4.33	34 Involute	674737
4.63	34 Involute	674801
4.88	34 Involute	674738
5.29	34 Involute	674739
5.38	34 Involute	675230
5.57	34 Involute	674740
5.83	34 Involute	674741
6.17	34 Involute	674742
6.50	34 Involute	674743
7.17	34 Involute	674744

19050S

14.50 Hypoid Gearing

Side Gear #126000

Ratio	Side Gear Spline	Carrier Exchange
3.36	36 Involute	674745
3.55	36 Involute	675398
3.70	36 Involute	674746
3.90	36 Involute	674973
4.11	36 Involute	674747
4.33	36 Involute	674748
4.63	36 Involute	674749
4.88	36 Involute	674750
5.29	36 Involute	674751
5.57	36 Involute	674752
5.83	36 Involute	674753
6.17	36 Involute	674754
6.50	36 Involute	674755
7.17	36 Involute	674756

19055S

17.00 Hypoid Gearing

Side Gear #110525

Ratio	Side Gear Spline	Carrier Exchange
3.70	39 Involute	675449
3.90	39 Involute	675450
4.11	39 Involute	675451
4.33	39 Involute	675452
4.63	39 Involute	675444
4.88	39 Involute	675366
5.29	39 Involute	675392
5.57	39 Involute	675453
5.83	39 Involute	675454
6.17	39 Involute	675455
6.50	39 Involute	675456
7.17	39 Involute	675457

19060S

15.00 Hypoid Gearing
Side Gear #127367

Ratio	Side Gear Spline	Carrier Exchange
4.11	39 Involute	675414
4.33	39 Involute	675415
4.63	39 Involute	675416
4.88	39 Involute	675417
5.29	39 Involute	675418
5.57	39 Involute	675419
6.17	39 Involute	675420
6.50	39 Involute	675421
7.17	39 Involute	675422

23070S, 23080S, 23085S

17.00 Hypoid Gearing
Side Gear #118959

Ratio	Side Gear Spline	Carrier Exchange
3.08	36 Involute	674714
3.25	36 Involute	674715
3.36	36 Involute	674716
3.55	36 Involute	674717
3.70	36 Involute	674718
3.90	36 Involute	674719
4.11	36 Involute	674720
4.33	36 Involute	674721
4.63	36 Involute	675462
4.88	36 Involute	675297
5.29	36 Involute	675463
5.57	36 Involute	675464
5.83	36 Involute	675465
6.17	36 Involute	675466
6.50	36 Involute	675467

21060S, 22060S

15.00 Hypoid Gearing
Side Gear #127368

Ratio	Side Gear Spline	Carrier Exchange
2.64	41 Involute	674877
2.85	41 Involute	674878
3.08	41 Involute	674879
3.25	41 Involute	674880
3.36	41 Involute	674881
3.55	41 Involute	674882
3.70	41 Involute	674883
3.90	41 Involute	674884
4.11	41 Involute	674885
4.33	41 Involute	674886
4.63	41 Involute	674887
4.88	41 Involute	674888
5.29	41 Involute	674889
5.57	41 Involute	674890
6.17	41 Involute	674891
6.50	41 Involute	674892

21065S, 22065S

15.50 Hypoid Gearing
Side Gear #110527

Ratio	Side Gear Spline	Carrier Exchange
3.36	41 Involute	674766
3.70	41 Involute	675323
3.90	41 Involute	674767
4.11	41 Involute	674768
4.33	41 Involute	674769
4.63	41 Involute	674770
4.88	41 Involute	674771
5.29	41 Involute	674772
5.57	41 Involute	674773
6.17	41 Involute	674909
6.50	41 Involute	674774
7.17	41 Involute	674775

23105S, 26105S, 30105S

**19.00 Hypoid Gearing
Side Gear #93401**

Ratio	Side Gear Spline	Carrier Exchange
3.08	36 Involute	675218
3.36	36 Involute	674986
3.58	36 Involute	675219
3.70	36 Involute	675220
3.90	36 Involute	675221
4.11	36 Involute	675222
4.33	36 Involute	674983
4.63	36 Involute	674984
5.25	36 Involute	675223
6.14	36 Involute	674985

23105S, 26105S, 30105S

**19.00 Hypoid Gearing
Side Gear #86779**

Ratio	Side Gear Spline	Carrier Exchange
3.08	39 Involute	674662
3.36	39 Involute	674663
3.58	39 Involute	674664
3.70	39 Involute	674665
3.90	39 Involute	674447
4.11	39 Involute	674666
4.33	39 Involute	674667
4.63	39 Involute	674668
5.25	39 Involute	674669
6.14	39 Involute	674670

19060D

15.00 Hypoid Gearing
Side Gear #127367

Ratio	Side Gear Spline	Carrier Exchange
4.11	39 Involute	675423
4.33	39 Involute	675424
4.63	39 Involute	675425
4.88	39 Involute	675426
5.29	39 Involute	675427
5.57	39 Involute	675428
6.17	39 Involute	675429
6.50	39 Involute	675430
7.17	39 Involute	675431

21065D

15.50 Hypoid Gearing
Side Gear #110527

Ratio	Side Gear Spline	Carrier Exchange
3.90	41 Involute	675386
4.88	41 Involute	675228
6.17	41 Involute	675269
7.17	41 Involute	675371

23105D

19.00 Hypoid Gearing
Side Gear #93401

Ratio	Side Gear Spline	Carrier Exchange
3.08	36 Involute	674959
3.36	36 Involute	674941
3.58	36 Involute	675369
3.70	36 Involute	675405
3.90	36 Involute	675244
4.11	36 Involute	675325
4.33	36 Involute	675240
4.63	36 Involute	674895

21060D

15.00 Hypoid Gearing
Side Gear #127368

Ratio	Side Gear Spline	Carrier Exchange
2.64	41 Involute	675280
2.85	41 Involute	675281
3.08	41 Involute	675282
3.25	41 Involute	675283
3.36	41 Involute	675284
3.55	41 Involute	675285
3.70	41 Involute	675286
3.90	41 Involute	675287
4.11	41 Involute	675288
4.33	41 Involute	675289
4.63	41 Involute	675290
4.88	41 Involute	675291
5.29	41 Involute	675292
5.57	41 Involute	675293
6.17	41 Involute	675294
6.50	41 Involute	675295

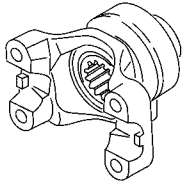
23070D, 23080D, 23085D

17.00 Hypoid Gearing
Side Gear #118959

Ratio	Side Gear Spline	Carrier Exchange
3.08	36 Involute	674722
3.25	36 Involute	674723
3.36	36 Involute	674724
3.55	36 Involute	674725
3.70	36 Involute	674726
3.90	36 Involute	674727
4.11	36 Involute	674728
4.33	36 Involute	674729
4.63	36 Involute	675468
4.88	36 Involute	675403
5.57	36 Involute	675469
6.17	36 Involute	675470
6.50	36 Involute	675471

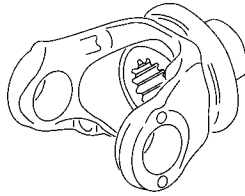
Yokes

Style X – Half Round U-Bolt



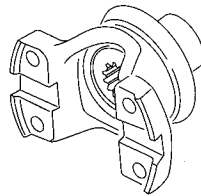
Thru holes or Tapped

Style Y – Full Round



Full Round

Style Z - Half Round Brg. Strap-tapped Hole



Tapped Holes/
BRG Strap

15040S, 19050S (34 Involute Splines)

Yoke Series	Joint Angle	Yoke Style	Part Number
1410	24.5	X	126425
1480	25.0	X	126427
1480	25.0	Z	126533
1550	24.5	Z	126429
1550	37.0	Z	126555
1610	30.0	Z	126531
1610	35.0	Y	126469
1710	34.0	Z	126535

19055S/D, 21/22065S/D (39 Involute Splines)

Yoke Series	Joint Angle	Yoke Style	Part Number
1480	20.0	Z	126565
1550	22.0	X	213185
1550	24.5	X	126555
1610	21.5	X	126561
1610	23.0	Y	126557
1710	32.0	X	126563
1710	32.0	Y	126559

19060S/D, 21060S/D, 22060S/D (39 Involute Splines)

Yoke Series	Joint Angle	Yoke Style	Part Number
1610	45.0	Y	128720
1610	35.0	Y	128721
1710	30.0	Y	127415
1710	45.0	Y	127614
1710	30.0	X	128745

23070S/D, 23080S/D, 23085S/D (44 Involute Splines)

Yoke Series	Joint Angle	Yoke Style	Part Number
1610	26.0	Y	128882
1610	24.5	Z	128889
1610	45.0	Y	128883
1710	28.0	Y	128884
1710	29.0	Z	128890
1710	42.5	Y	128885
1760	30.5	Y	128886
1760	30.5	Z	128891
1810	29.5	Y	128887
1810	30.0	Z	128892

23105S/D, 26/30105S/D (44 Involute Splines)

Yoke Series	Joint Angle	Yoke Style	Part Number
1610	22.0	Z	210730
1710	27.5	Y	210732
1710	27.5	Z	210728
1760	30.0	Y	210733
1760	30.0	Z	210727
1810	30.0	Y	210731
1810	30.0	Z	210729

Kits and Assemblies

This kit contains installation tools used for installing driveline oil seals on Models 19060S/D, 21060S/D and 22060S/D. Using these tools ensures proper installation of the seal. Failure to use these tools may result in an improperly installed or damaged seal.



DESCRIPTION	MODEL	21060S								
		15040S	19050S	19055S	19055D	19060S	19060D	22060S	21060D	22060D
BASIC OVERHAUL KIT		121733	121747	121769	121769	216221	217464	216221	217464	217464
CARRIER & CAPS ASSY.		121737	121754	121774	211313	216223	217362	216223	217362	217362
CAGE & CUP ASSY.		210340	210189	210011	210011	127600	127600	127600	127600	127600
OIL SEAL & SHIM KIT		115551	115551	121773	121773	216225	216225	216225	216225	216225
RING GEAR NUT & BOLT KIT		121736	121753	121772	121772	219704	219704	219704	219704	219704
WHEEL DIFFERENTIAL KIT		114467	121748	114469	114469	217461	217461	216229	216229	217462
WHEEL DIFFERENTIAL KIT, W/O SIDE GEARS		118746	121749	118748	118748	216228	216228	216228	216228	216228

DESCRIPTION	MODEL	23105S							
		21065S	21065D	23070S	23070D	23080S	23080D	26105S	23105D
		22065S	22065D	23070S	23070D	23085S	23085D	30105S	23105D
BASIC OVERHAUL KIT		121769	121769	121784	121784	213744	213744	119801	123297
CARRIER & CAPS ASSY.		121774	211313	121791	210701	213652	210701	119792	123293
CAGE & CUP ASSY.		210011	210011	210511	210511	127843	127843	126290	126290
OIL SEAL & SHIM KIT		121773	121773	119796	119796	119796	119796	119796	119796
RING GEAR NUT & BOLT KIT		121772	121772	121790	121790	121790	121790	119802	119802
WHEEL DIFFERENTIAL KIT		114470	114470	121785	121785	121785	121785	102546	114472
WHEEL DIFFERENTIAL KIT, W/O SIDE GEARS		118748	118748	121786	121786	121786	121786	118749	118749

Dana Commercial Vehicle Products Group

3939 Technology Drive
Maumee, Ohio, USA 43537

www.dana.com



SPICER[®]

Drivetrain Products